



IRONBUILT
INFRASTRUCTURE



CAPABILITY STATEMENT

www.iron-built.com.au



Who We Are.

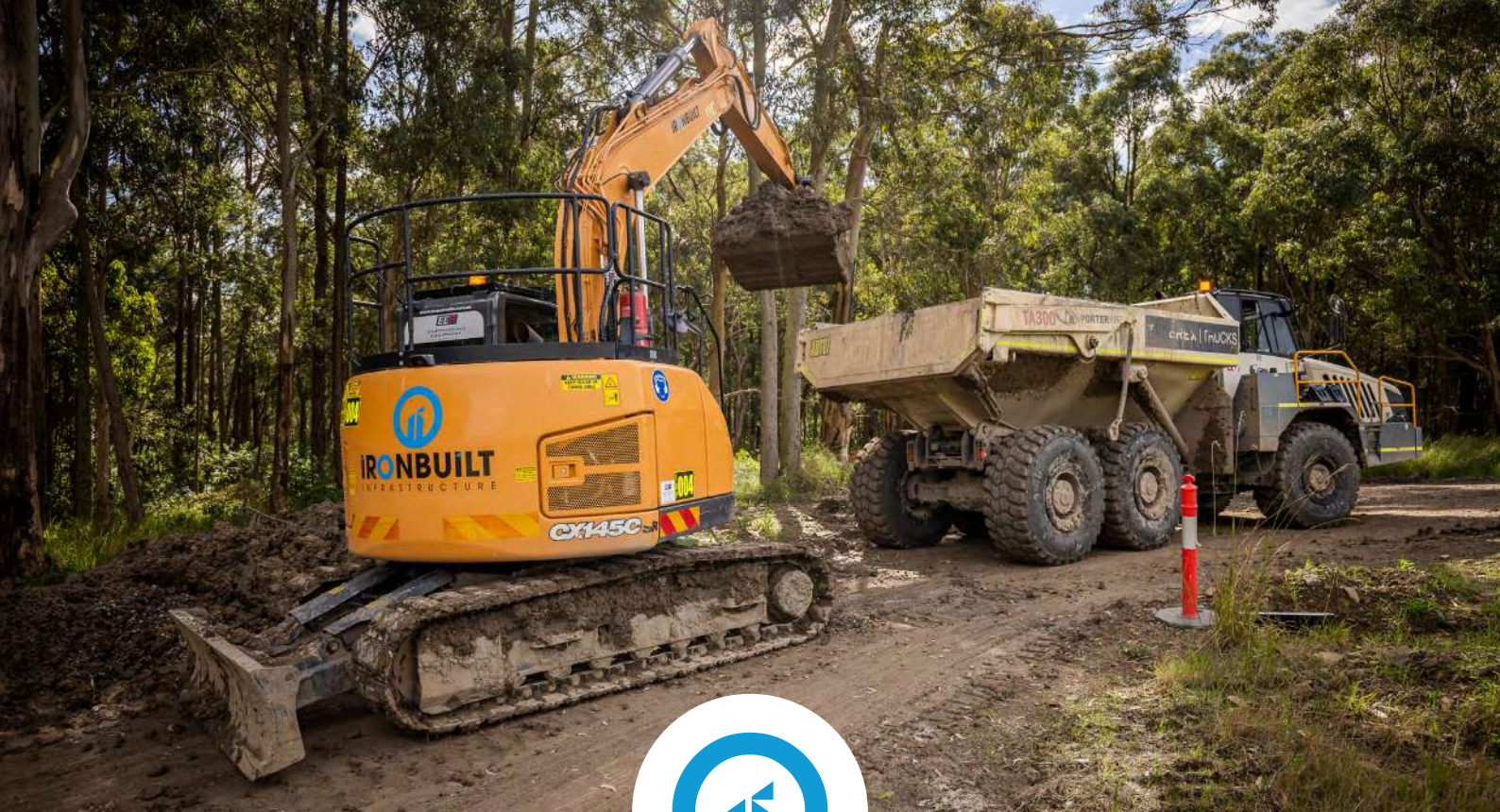
Here at Ironbuilt Infrastructure we provide Civil Contracting and Project Management services for government, development and resource sector clients, working on public and private infrastructure projects.

We pride ourselves on our friendly and professional service, and are known for our compliance capabilities – quality, safety and environmental awareness – delivered consistently by an experienced team, on time and within budget.

We strive to deliver a culture of civil engineering excellence through our engineers, people and our civil construction projects. To achieve this we commit to living our values which define our culture and underpin how we conduct ourselves as individuals and as a business.

Our commitment to developing and maintaining strong relationships with our clients has enabled us to successfully secure regular repeat business, often carrying out multiple projects for the same client.



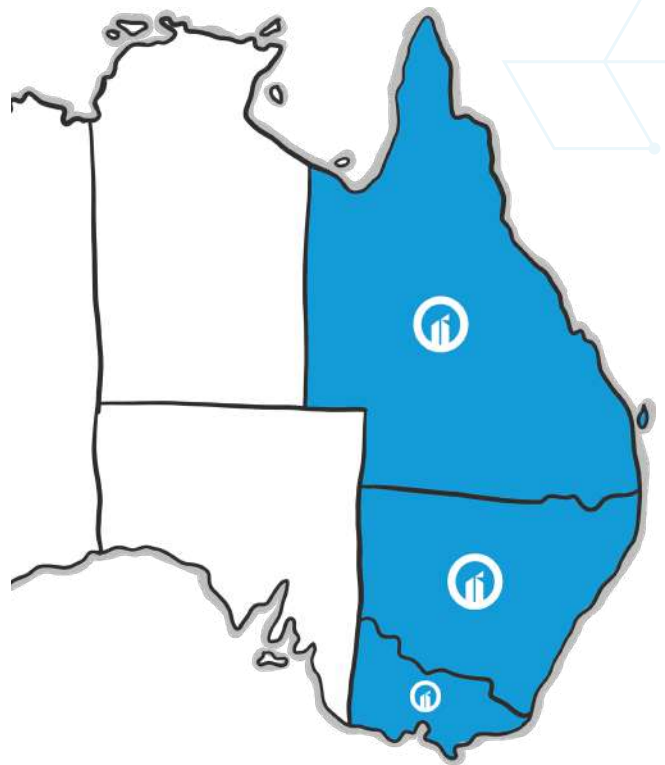


What We Do.

We are experts in all aspects of Civil & Commercial Construction projects. We specialise in projects involving water, wastewater, electrical, and telecommunications infrastructure which require a strategic and considered approach.

These services are essential to the communities in which they operate, and delivering them on-time and to specification is of the utmost importance. Ironbuilt Infrastructure has a proven history of completing complex projects under even the most challenging circumstances. From managing large greenfield projects to the most complex brownfield sites, we have the capacity to deliver all facets of projects.

With our over 50 FTE and 40+ fleet of plant, we are able to deliver projects up to \$20m+.



Working out of our Wollongong head office we're able to operate anywhere in Queensland, New South Wales, Victoria & the ACT. We're able to do this whilst maintaining the same quality, safety and environmental standards that we're renowned for.



Resources

Ironbuilt Infrastructure are able to deliver key projects through the utilisation of our skilled and experienced inhouse team, along with our ever growing fleet of late model plant and equipment.

This plant is summarised below, but is always increasing, if you would like an updated like please reach out directly.



Personnel

- ✓ Estimators
- ✓ Project Managers
- ✓ Project Engineers
- ✓ Site Engineers
- ✓ Graduate Engineers
- ✓ Site Supervisors
- ✓ Leading Hands
- ✓ Concretors
- ✓ Steel Fixers
- ✓ Formworkers
- ✓ Operators
- ✓ Pipe Layers
- ✓ Mechanical Fitters
- ✓ Skilled Labourers



Plant

- ✓ Positracks
- ✓ Excavators up to 50tn
- ✓ Small Dozers
- ✓ Graders
- ✓ Rollers
- ✓ Telehandlers
- ✓ 9tn Articulated Dump Trucks
- ✓ 30tn Articulated Dump Trucks
- ✓ 40tn Articulated Dump Trucks
- ✓ 14000l water carts
- ✓ 8000l water warts
- ✓ Hiab Trucks



CIVIL INFRASTRUCTURE & DEVELOPMENT

Baptist Care Lendlease



Value: \$13.07m



Location: Narellan, NSW



Project Status: Completed Nov 2019



Contact: Andrew Hollington

Organisation: Lendlease

Mobile: 0451 750 002

The BaptistCare Narellan project located in Elderslie delivers affordable housing within a community title subdivision supporting 122 off affordable housing dwellings. Roads and infrastructure provision supports future Aged Care Facility and amplification of the existing private Retirement Village.

The scope of work included:

- Site Remediation and bulk earthworks 7.2ha of land, requiring 40,000 m³ of cut
- Coordination of utility infrastructure to include Sewer, Water, HV and LV Electrical, Gas and NBN
- Concrete piled retaining walls
- 980m of 3m high sleeper retaining walls
- Stormwater drainage
- 450m of 3m cantilever block retaining walls
- Road pavement construction to include kerb and gutter, parking bays and asphalt concrete
- Landscaped retention and detention basins



IRONBUILT
INFRASTRUCTURE

Coastal Waters Stages 7-11

Coastal Waters Retirement Village Pty Ltd



Value: \$8.69m



Contact: Adriano Morosin



Location: Worring Heights, NSW

Position: Project Manager



Project Status: Completed Jan 2020

Mobile: 0437 170 477

Extensive subdivision works were completed for the Retirement Village, involving various civil engineering disciplines and meticulous communication to ensure the safety and well-being of over 800 residents during construction.

The scope of work included:

- Civil engineering works including site preparation, earthworks, and infrastructure installation
- Extensive bulk earthworks involving excavation and land grading
- Construction of major retaining walls for slope stabilisation
- Pavement works encompassing roads, pathways, and parking areas
- Implementation of drainage systems for stormwater management
- Landscaping and final touches for aesthetics and functionality
- Ongoing communication with the retirement village to ensure resident safety and information throughout the project.

Retford Park Estate

James Oswald Fairfax AC



Value: \$11.42m



Location: Bowral, NSW



Project Status: Completed Jan 2019

Extensive subdivision works were undertaken, encompassing civil engineering, utility upgrades, landscaping, and infrastructure development to meet stringent streetscape and parkland requirements.

The scope of work included:

- Comprehensive civil engineering works encompassing site preparation, earthworks etc.
- Extensive bulk earthworks involving excavation and land grading
- Significant service upgrades including the relocation of 33KV powerlines from overhead to underground
- Upgrading of the existing sewer and water network to accommodate the new development
- Implementation of drainage systems for effective stormwater management
- Landscaping and final touches for aesthetics and functionality
- Extensive landscaping to meet specific streetscape and parkland specifications

Woolworths Industrial Subdivision

Woolworths Group



Value: \$7.3m



Location: Victoria Street, Wetherill Park, NSW



Project Status: Completed May 2023



Project Manager: Rhys Kelly



Project Engineer: Megan Navadi



Site Supervisor: David Foster

Ironbuilt Infrastructure were awarded this project through competitive tender process, through our innovative methodology, we were able to pass on cost and time saving options via insitu stabilisation rather than stabilised import placement.

Our scope included:

- Site Establishment including amenities and authority connections
- Design of all utilities including Level 3 ASP.
- Bulk earthworks up to 40,000m³ cut/fill process over a 9hectare site
- Level 1 ASP Power, Water and Sewer Connections to the site including Authority liaison
- 55,000m² of Stabilised pavement installation including insitu cement blending
- Permanent Sediment Basin
- Maintenance for 12 months



IRONBUILT
INFRASTRUCTURE



**OTHER PROJECT
EXPERIENCE**

Molonglo AZ

Connection works Transgrid



Value: \$1.4m



Location: Molonglo, ACT



Project Status: Completed Jun 2022



Project Manager: Andy Zwar



Project Engineer: NA



Site Supervisor: Brendan Nicole

Ironbuilt Infrastructure was engaged by Transgrid to perform modification works to a live substation

The scope of work included:

- Site mobilisation and establishment
- PSSR Trained works in live substation
- Demolition of existing structures
- Conduits install including large cable pits
- Stormwater drainage
- Large F type structure of multiple designs per Transgrid specification
- Re instatement of aggregate layer
- Demobilisation

Dapto Substation Asset Replacement Works Transgrid



 **Value:** \$1.3m

 **Location:** Cleveland Road, Dapto NSW 2530

 **Project Status:** Completed May 2020

 **Project Manager:** Rhys Kelly

 **Project Engineer:** NA

 **Site Supervisor:** Michael Kelly

Ironbuilt Infrastructure was engaged to complete all civil works on one of the largest substations in NSW. Working in and around a live substation required the utmost care to ensure the safety of all of those involved, as well as the continued supply of power to the southern Illawarra.

The scope included:

- Excavation of large footings within a live substation using specialized equipment
- Trenching for new conduits
- Demolition of existing plinths
- FRP of footings including coring and setting of rag bolts within 2mm tolerance
- Live substation works in both 330KV and 132 KV

Lismore 132KV

Substation Upgrade Transgrid



Value: \$1.3m



Location: Lismore, NSW



Project Status: Completed Oct 2022



Project Manager: Rhys Kelly



Project Engineer: Ishwor Pohkarel



Site Supervisor: Brendan Nicole

Ironbuilt Infrastructure was engaged by Transgrid to perform modification works to a live substation

The scope of work included:

- Site mobilisation and establishment
- PSSR Trained works in live substation
- Demolition of existing structures
- Bulk Earthworks
- Conduits install including large cable pits
- Stormwater drainage
- Fencing Adjustments
- Re instatement of aggregate layer
- Demobilisation

Molonglo UGOH

Poles Zinfra



Value: \$.55m



Location: Molonglo, ACT



Project Status: Completed Dec 2022



Project Manager: Rhys Kelly



Project Engineer: Ishwor Pokharel



Site Supervisor: Brendan Nicole

Ironbuilt Infrastructure was engaged by Zinfra to complete all civil works and assist with installation of the overhead to underground precast pole and pit installation

The scope included:

- Piling works to 10m deep in medium to hard rock
- Anchor block Installation including FRP and angle tensioner installation
- Installation of UGOH Pole stubs
- Re shape pad for drainage purposes

Vineyard 132kV

Connection Transgrid



Value: \$1.1m



Location: Vineyard, NSW



Project Status: Completed June 2023



Project Manager: Megan Navadi



Project Engineer: NA



Site Supervisor: Nathan Thompson

Ironbuilt Infrastructure was engaged by Transgrid to perform modification works to a live substation

The scope of work included:

- Site mobilisation and establishment
- PSSR Trained works in live substation
- Demolition of existing structures
- Conduits install including large cable pits
- Stormwater drainage
- Large F type structure of multiple designs per Transgrid specification
- Re instatement of aggregate layer
- Demobilisation

Walla Walla

Substation Civil Works CPP



Value: \$3.6m



Location: Walla Walla, NSW



Project Status: Completed Nov 2023



Project Manager: Rhys Kelly



Project Engineer: Megan Navadi



Site Supervisor: Joel Ledger

Ironbuilt Infrastructure were engaged by Consolidated Power Projects to complete the civil scope of works including:

- Excavation and FRP of over 300 various shape footings with rag bolt installations at maximum 2mm tolerance with over 1100m³ poured and 250tns of reinforcement.
- Supply and Installation of 16km of high voltage conduits ranging from 50mm to 250mm.
- Stormwater drainage both RCP and Surface drainage.
- Piling works to large gantry footings 1.2m diameter and 8m deep

This project called for precise planning and tight quality management to which Ironbuilt delivered for the client.

Stubbo Switch Yard Zinfra



Value: \$9m



Location: Stubbo, NSW



Project Status: Completed April 2024



Project Manager: Tapp Lautasi



Project Engineer: Leon Newling



Site Supervisor: Nathan Thompson/ Mark Jones

Ironbuilt Infrastructure were engaged after a lengthy tender process to complete full build of the switchyard

Our scope included:

- Site preparation and construction of site compound area, and laydown area.
- Bulk earthworks as required.
- Construction of new access road inside the switching station.
- Installation of Subsoil drainage system as per the layout given.
- Construction of HV equipment footings including Surge Arrestors, Voltage Transformers.
- Disconnectors, Circuit Breakers, Current Transformers, 330kV Bus Support Structure.
- Insulator Post, Gantry Tower foundations, Light and Security Poles.
- Construction of kerb and gutter, concrete V drain, roadside kerbs, hard stand areas.
- Supply and installation of sewer services as per drawings.
- Earth grid trenching and backfill.
- Supply, and Installation of the security fencing.
- Construction of cable trench including cable pits and Marshalling Box pits.
- Construction of Pad Footings for Aux Service Building.
- RC Slabs for Shippings container.
- Installation of underground conduits and pits as per drawings.
- Construction of Access track for Transmission Line as per drawings.
- Construction of Transmission Line 79 Tower 119A foundation as per drawings.
- Rehabilitation of all disturbed areas.

SLDC Weighbridge Upgrade Woolworths



Value: \$1m



Location: Erskine Park, NSW



Project Status: Completed March 2023



Project Manager: Rhys Kelly



Project Engineer: Ishwor Pokharel



Site Supervisor: Nathan Thompson

Ironbuilt Infrastructure was engaged by Woolworth Group to design and construct the new entry ways for the weighbridge upgrade at a Distribution Centre in Western Sydney

The scope included:

- Design of all civil aspects including Council approval process
- Temp Traffic Management including temporary weigh bridge
- Demolition of existing weighbridge areas
- New concrete including island adjustments and pavement upgrades
- Installation of all electrical and communications system
- Installation of all components for the new system
- Testing and commissioning
- Line marking and signage

Mogo SPS Upgrade

Eurobodalla Council



Value: \$1.4M



Location: Tomakin Road, Mogo, NSW 2259



Project Status: Completed June 2023



Project Manager: Rhys Kelly



Project Engineer: Ishwor Pokharely



Site Supervisor: Matthew Birkin

In December 2022, **Ironbuilt Infrastructure** was awarded the package to upgrade a SPS in the small town of Mogo, in the south coast of NSW.

The scope was as below:

- Site mobilisation including utility adjustment and installation
- Design, install and commission a bypass system with a large head capacity of 70m
- Decommission all telemetry, mechanical and electrical to the SPS
- Supply and Install new pipework, valves, remote flow meters and relevant fittings
- Supply and install new pumps
- Supply and install of a new major switch board including main feed upgrades
- Refurbishment of valve pits and wet well including hydro demolition, spot repair and CAC lining
- Supply and install new Mcberns lids to each section
- Large pavement installation including concrete bunding areas and eyewash/tank pad
- Supply and install Chem tank, eyewash and relevant services
- Test and commissioning

Leachate Pit and Pump Construction Newcastle City Council



Value: \$4.2m



Location: Summerhill Waste Facility



Project Status: Completed Nov 2023



Project Manager: Louis Ayoub



Project Engineer: NA



Site Supervisor: Ricky Mason/ Joel Ledger

Ironbuilt Infrastructure were engaged to complete a new pit structure and pumping system for all cell leachate management, this included:

- Design, coordination and management of New pumping system to handle the existing leachate catchment.
- Integration into the existing system including automatic valving and SCADA
- Construction of an 8m tall valve pit including penetrations at multiple levels
- Live leachate management and confined space including methane gas and CABA requirements
- Bypass of Leachate for works

These works were considered high risk which required paramedics to remain onsite during the entire duration. The project was delivered with no incidents and ahead of program.

Leachate Enabling Works Newcastle City Council



Value: \$3.72m



Location: Summerhill Waste Facility



Project Status: Completed December 2023



Project Manager: Louis Ayoub



Project Engineer: NA



Site Supervisor: Ricky Mason

Ironbuilt Infrastructure were engaged as Principal contractor to complete Leachate Pond enabling works, this involved high risk works in live leachate lines and pumphouse, scope included:

The scope was as below:

- Installation of conduits into pits at OLLP, Silt Trap & Pumphouse
- Supply, installation & termination of cabling between Valve house & Silt trap temp pump
- Supply, installation & termination of Power And Fiber cabling between Pumphouse Pump Panel & OLLP Radar
- Supply & Installation of OLLP Radar & Catenary Wire across pond
- Supply & Installation of Marshalling box at OLLP
- Installation of Fiber cabling between Pumphouse MCC & OLLP Marshalling Box
- Installation of new Pumphouse MCC
- Supply & Installation of Silt Trap valving (DN300 & DN200 Actuated Valves) & piping up to hillside silt pits and temporary Leachate line
- Installation of Pipe connection between OLLP Gravity line and Pumphouse mono suction lines.
- Installation of DN110 Pipe between Silt trap and OLLP
- Installation and connection of pump, piping & float switches at Silt trap
- Install of temporary leachate sump and pump

Leachate Pond Upgrade and relining Newcastle City Council



Value: \$2.5m



Project Manager: Louis Ayoub



Location: Summerhill Waste Facility



Project Engineer: NA



Project Status: Complete Jan 2024



Site Supervisor: Ricky Mason/ Joel Ledger

Ironbuilt Infrastructure were engaged to complete a Leachate pond relining scope for Newcastle council, this involved managing Live leachate and sewer flows including by passing the pond, scope as below:

- Sewer and leachate diversion works including supply and install of bypass pumping system, temp pits, design works etc
- Demolition of existing liner and disposal of contaminated materials to landfill
- Confining layer installation
- Silt trap connection works including temp bypass for works
- New liner installation including anchor trenching and new pipework penetrations

This project required diversion of heavy rated flows of leachate and sewer, this required a detailed BMP and management of such. This was delivered within program and budget.

Bundanoon Wastewater Pumping Station Wingecarribee Council



Value: \$650,000+



Location: Elsmore Road, Bundanoon NSW 2578



Project Status: Completed January 2022



Project Manager: Rhys Kelly



Project Engineer: NA



Site Supervisor: Michael Kelly

Ironbuilt Infrastructure was engaged by Gongues Constructions to perform a Sewer Pump Station & Electrical Panel Upgrade on two locations in Bundanoon, NSW on behalf of Wingecarribee Shire Council.

During the project, numerous challenges have been encountered and successfully and safely overcome. One of the most challenging aspects of the project was the deep excavation of the overflow tank. Following the excavation, preparation of the subbase & slab was needed before the tank could be installed by our specialist contractor.

Once the tank was installed, we were required to install PVC pipes to link the new tank to the mains as well as backfill & compact around the tank to ensure it was submerged safely. Ironbuilt went above and beyond to ensure all high-risk tasks are being completed safely & successfully.

Post major work completion, a bypass was required for the cut over scope, this involved 3 different pumps transferring from 4 manholes including vacuum trucks on standby. This was a shut down scope and therefore was critical for programming which the work was complete in time and budget.

Mossvale and Berrima Pump Station

Works Wingecarribee Council



Value: \$2.5m



Location: Lackey Park, Mossvale - Australia Rd, Berrima



Project Status: Completed Jan 2021



Project Manager: Rhys Kelly



Project Engineer: NA



Site Supervisor: Michael Kelly

Late 2020 Wingecarribee council opted for an upgrade to two sewer pump stations including new wet wells, valve pits, tanks, rising mains and electrical boards. This project involved two separate sites.

Ironbuilt Infrastructure were engaged to complete all civil works through out the project including:

- Bulk earthworks and detail earthworks for new tanks, including all geotechnical
- Construction of new tanks including new mac lid installation, anchor blocks, general concrete works
- New sewer rising main, bridge lines and multiple manholes
- Cut over planning and implementation including bypass pumping systems, Wet well break ins etc
- Remediation of existing tanks including relining

Bringelly Road Service Station Kenik



Value: \$2.5m



Location: Bringelly, NSW



Project Status: Completed August 2021



Project Manager: Rhys Kelly



Project Engineer: NA



Site Supervisor: Kawthar Motiei

Ironbuilt Infrastructure was engaged by Kenik to complete all civil works for the construction of a new Service station including restaurants.

Our scope included:

- 30,000m³ bulk earthworks
- 3km Stormwater drainage
- Detail excavations
- Roads and Pavements
- Detention basin with Gabion walls
- External roads, kerb and gutter
- Concrete works including pavements and slabs

Stockland Shellharbour

Public area upgrade Stocklands



Value: \$1.5m



Location: Shellharbour, NSW



Project Status: Completed Dec 2021



Project Manager: Rhys Kelly



Project Engineer: Ishwor Pokkarel



Site Supervisor: Brendan Nicole

Ironbuilt Infrastructure was engaged by Barpa and Stocklands to deliver the full scope of works for the pedestrian upgrade at Stocklands Shellharbour

The scope included:

- Demolition of all existing pavements
- Stormwater drainage including pit adjustments
- External islands and traffic diversions
- Retaining walls
- 800m2 Slab including multiple accesses
- Lightpole relocations
- Asphalt installation
- Landscaping

Environmental Compliance

Newcastle City Council



Value: \$8m



Location: Summerhill Waste Management Centre,
Wallsend, NSW



Project Status: Complete January 2023



Project Manager: Rhys Kelly



Project Engineer: Louis Ayoub



Site Supervisor: Ricky Mason

Ironbuilt Infrastructure were engaged to complete multiple scopes of work that were detailed in the ECP. These scopes were diverse and complex in both stature and scope. This resulted in Ironbuilt needing to adapt and procure items quickly and efficiently both in resources and materials.

Our scope has included:

- Leachate Pond construction, both new and refurbishment
- Leachate System Upgrade including pumps, pipework and Scada supply and install.
- Stormwater management and upgrades
- Swale construction and lining
- High risk works including haz mat and Breathing apparatus scopes for entry
- Crushing and screening operations
- Traffic Management

The Maltings Bridge

Remediation Medich Corp



Value: \$1m



Location: Mittagong NSW



Project Status: Completed December 2020



Project Manager: Rhys Kelly



Project Engineer: NA



Site Supervisor: Michael Kelly

Ironbuilt Infrastructure were engaged as Principal contractor to complete the refurbishment of a well known heritage listed bridge

This project entailed a detailed amount of research and design to ensure the bridge was restored to its former glory in all aspects.

The scope included:

- Demolition and removal of all rotted bearers, joists and decking
- Remediation of existing headstocks and abutments
- Supply and installation of all new hardwood timber girders, bearers and ironbark deckings
- Decking fastened with special forged pins
- Scour Protection using large sandstone boulders

Olds Park Athletics

Georges River Council



Value: \$1.5m



Location: Olds Park, Sydney, NSW



Project Status: Completed Dec 2019



Project Manager: Rhys Kelly



Project Engineer: NA



Site Supervisor: Mitchell Oxley

Ironbuilt Infrastructure was engaged by Georges River Council / Little Athletics for a specialty project at the largely known Olds Park where the current athletics facilities were dilapidated and required replacing.

The scope included:

- Remove and replace 6 discus and shotput stations including demolition, earthworks, drainage, concrete works and specialty rubber install. This involved complex form work and concreting for the internal rings.
- Supply and installation 3 off 5m high cages around the discus stations including 6m gates.
- Excavation and installation of infill slabs between long jump and triple jump stations including concrete works and specialty sports rubber installation.
- Demolition and replacement of existing pit walls including drainage, FRP, and specialty sand installation.



Level 1/ 49 Industrial Road
Unanderra NSW 2526



02 8538 4170



www.iron-built.com.au



tenders@iron-built.com.au



IRONBUILT
INFRASTRUCTURE

